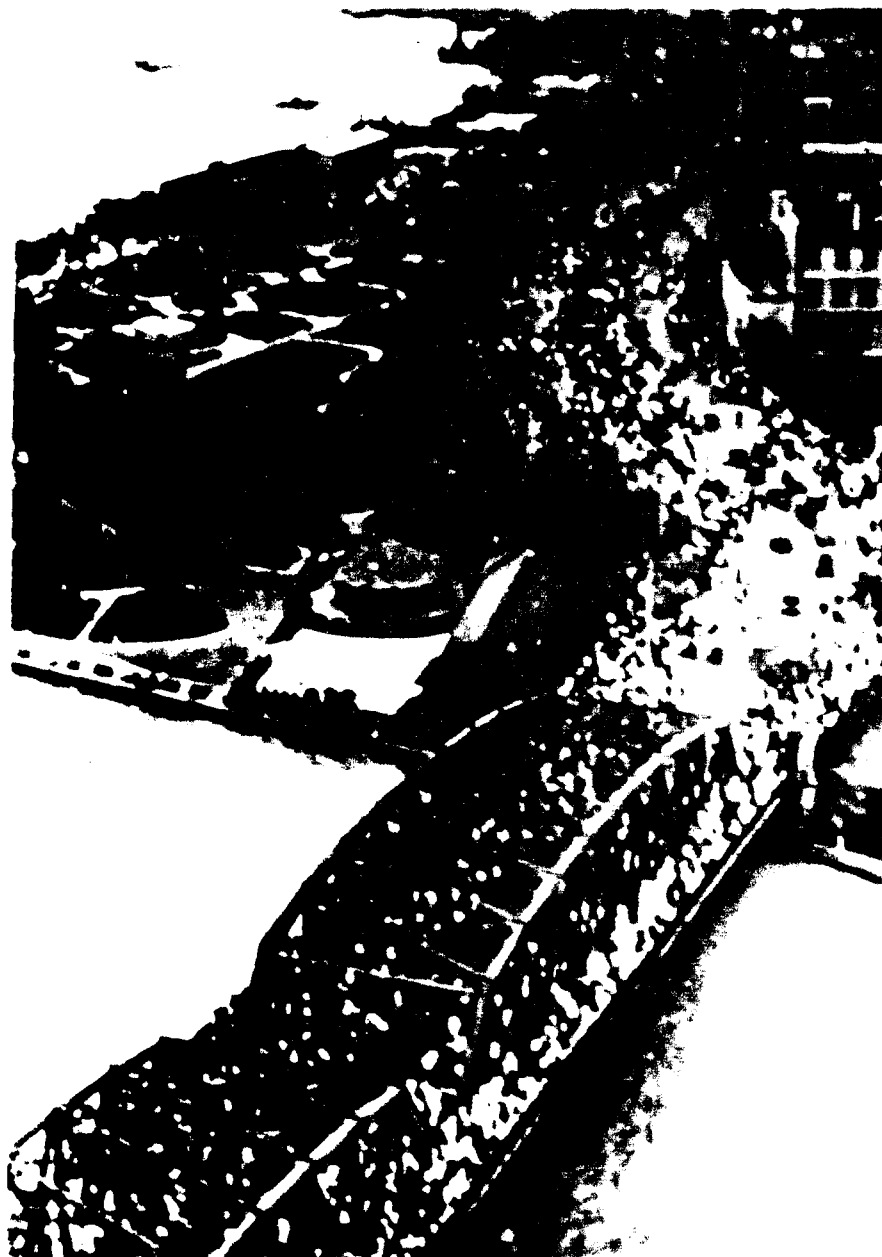


**Figure 3.** *Countries and Capitals of Asia*



*Support Element, 1st  
Strategic Air Command  
view of the north of Seoul, Korea, under  
bombardment by Chinese planes and artillery.  
SOURCE: AIR FORCE PHOTO ARCHIVE (SC 50 100 001)  
11/80/20*



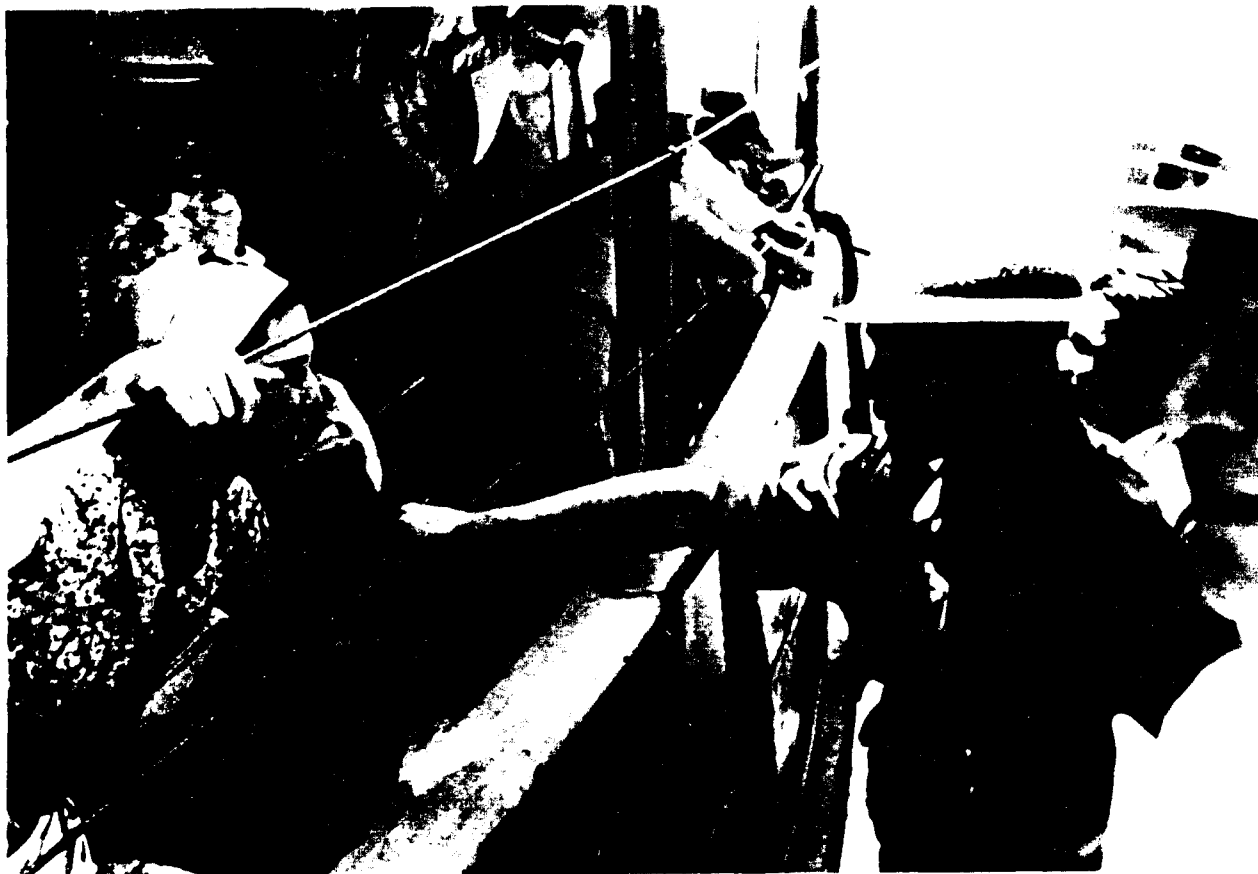
*Support Document - 131*

*Shanghai, China*

*Garden Bridge, Shanghai, packed with refugees heading  
into the relative sanctuary of the international settlement  
to avoid being caught in the war zone.*

*circa August 12, 1957*      *NI177814*

*Courtesy of WADM ALI DEYO, USNIRET.*



*Support Document - 141*

*Shanghai, China*

*A member of the volunteer corps says goodbye to his wife, on the customs jetty, Shanghai, on or about August 17, 1937, during the evacuation of Neutral Nations' Nationals' Dependents to safer ports.*

*Courtesy of RADM J. P. WALKER, USN(RET.)*

*NH 77887*